

Table of Content

1. How-to- Switching on the Smart VR Wall
2. How-to- Switching off the Smart VR Wall
3. How-to- Switching on the Blank/Freeze Mode.
4. How-to- Changing the Smart VR Wall's View Configuration
 - 4.1. Choosing Presets
 - 4.2. Altering Position and Extension of Inputs
 - 4.3. Changing the Eyes for Stereoscopic Output
5. Calibration
 - 5.1. Camera
 - 5.2. Projector Parameters
 - 5.3. Calibration/Auto Calibration

1. How to Switching on the smart VR Wall



Boot up control tablet. The Wall Manager is started automatically via Windows Autostart.

Press the button “Power” in the left section of main menu. This switches on the pixel processor. The pixel processor switches on the projectors of the system after it finished its booting process. Several parameters of the projectors are set in this process. After this the system starts displaying input Signals.

If mac addresses of user’s equipment are defined in the config-files, it is also possible to wake up customers Workstations as well. (Wake on Lan)

Switching on the system enables the menu “Media Control Presets”. Switching on the system is necessary if you want to calibrate it.

If the Control Tablet is not available the pixel processor and the Smart VR Wall can be started by pressing the power button of the pixel processor.

2. How to Switching off the smart VR Wall



Press the button “Power” in the left section of main menu. Confirm the security request with “Yes”. After that the pixel processor will shut down and the Wall will go into Cooling Down mode.

If IP addresses and corresponding user accounts of users equipment are defined in the config-files of the system also peripheral computers are switched off.

Switching off the system disables the menu “Media Control Presets”.

If the control tablet is not available the pixel processor can be switched off by pressing its power Button.

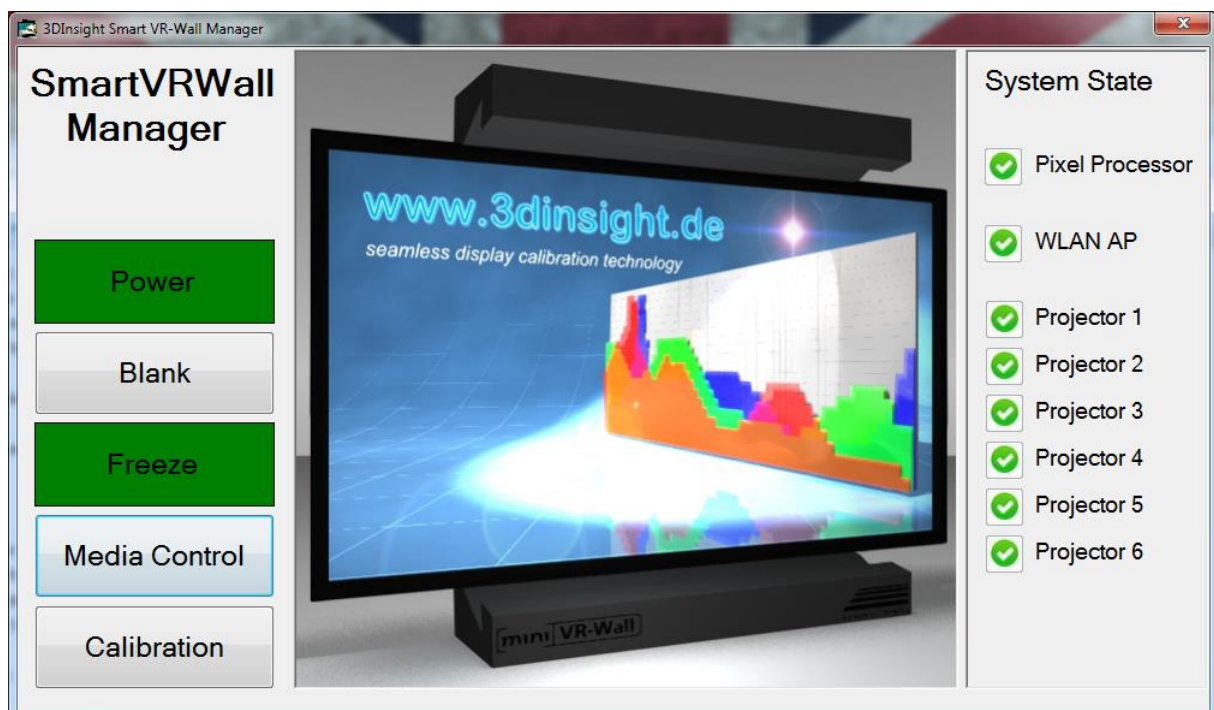
Otherwise the projectors should always be switched off using the control tablet software.

3. Switching the smart VR Wall to Blank/Freeze Mode

If you want to Blank the Wall to grab attention from your Viewers to Explain something in particular, you can use the Blank button. It will only Set the Wall to a Black Screen.



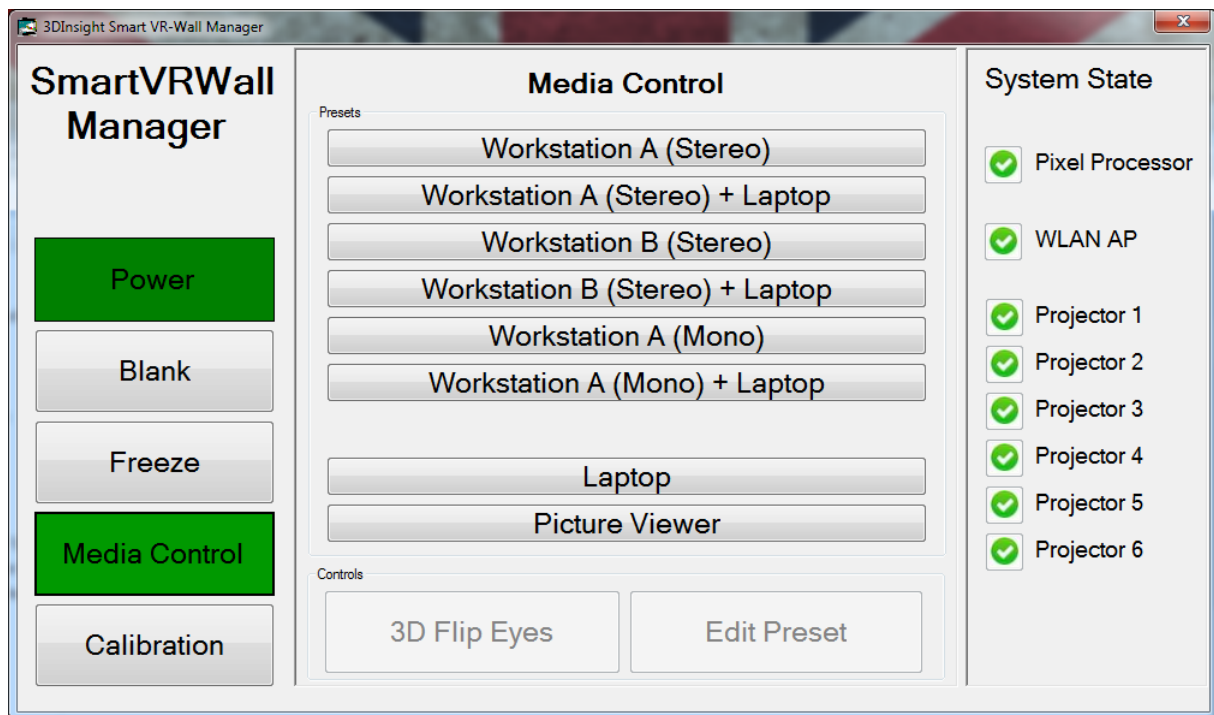
If you want to Freeze a particular Scene you can use the Freeze button to Freeze Content on the Wall. Meanwhile you can keep working on your Workstation and Prepare the Next content.



4. How to Changing the Smart VR Wall's Configuration

4.1. Choosing Presets

Depending on the count of inputs of your Smart VR Wall you choose different Predefined viewing configurations. Up to three input signals can be presented side by side and / or in Picture-in-Picture-Mode. By pressing the button "Edit Preset" you enter the view preset Selection section of the main menu. Here you can switch between up to eight pre-defined scenarios.



4.2. Altering Position and Extension of Inputs

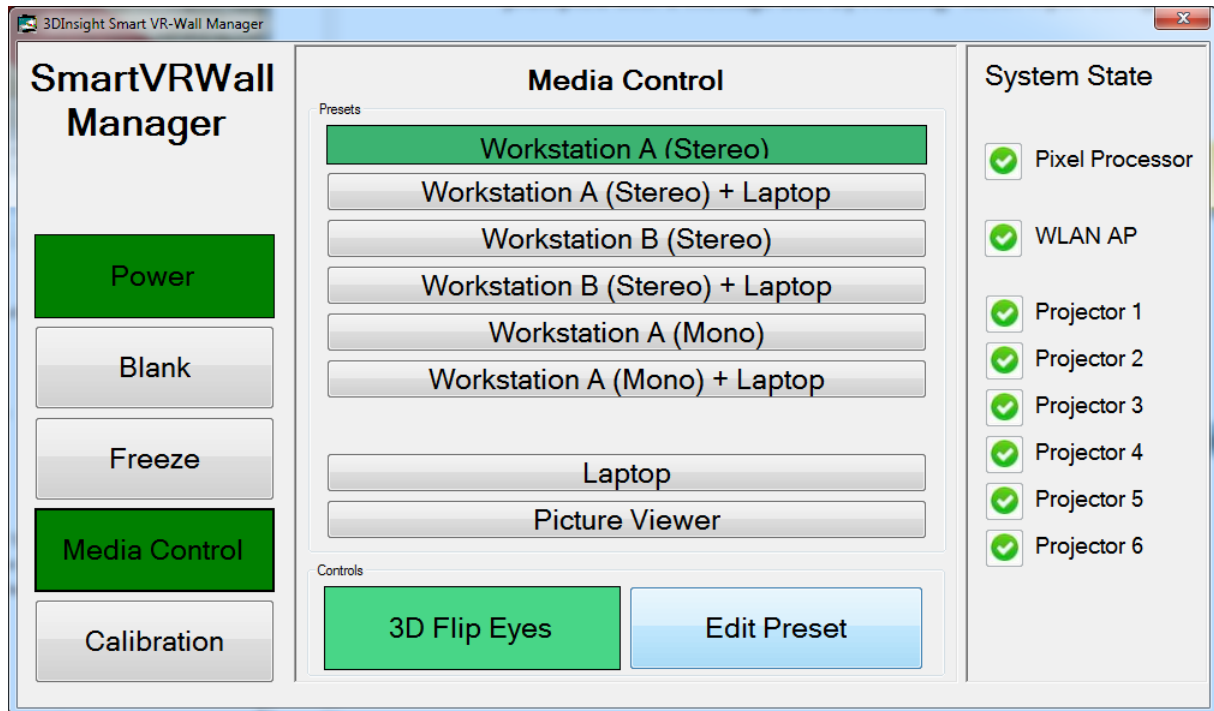
By pressing the button "Positions and Extensions" a new menu is opened where you can modify the Currently chosen viewing configuration.

BILD kommt

Here you can change the extension and position of the primary and the secondary input signal. It depends on the view configuration what signal is marked as primary or secondary. The extensions of an input signal can be changed by keeping several predefined or the current custom aspect ratio. The changes can be saved by pressing the button "Save Input Configuration". Successful saving is prompted with a message box. By Pressing "Reset Input Configuration" you can undo your changes. Pressing the button "Back" lets you return to the main menu.

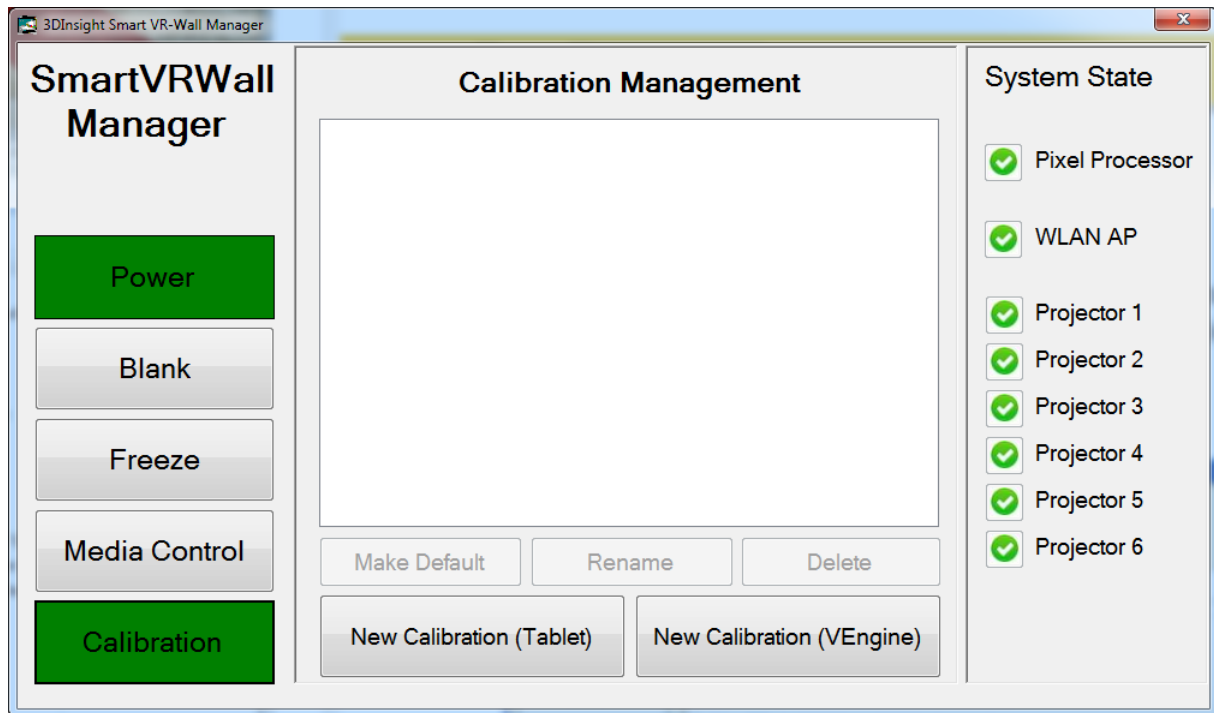
4.3. Changing the Eyes for Stereoscopic Output

By pressing the button “Flip Eyes” the left and right eye for stereoscopic output are interchanged.

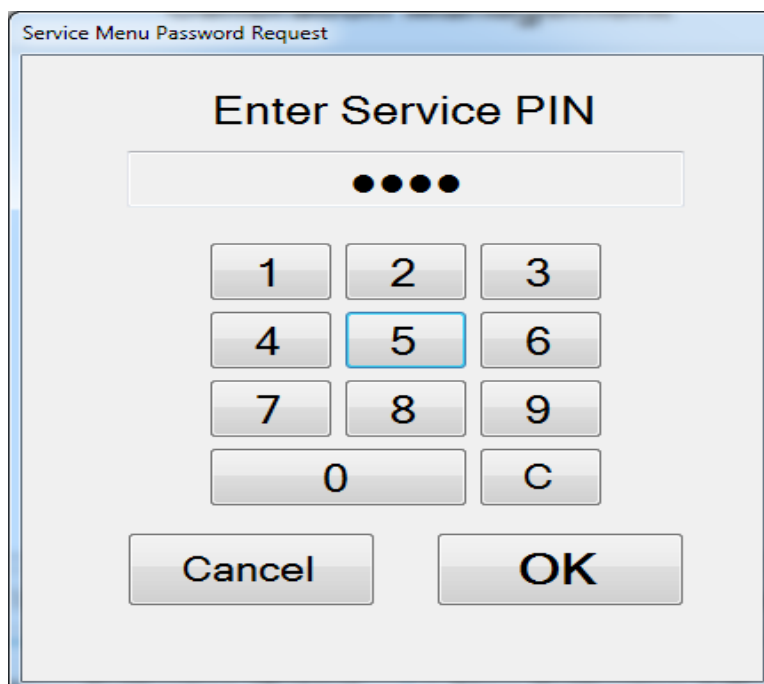


5. Mini How To Calibration of the Smart VR Wall

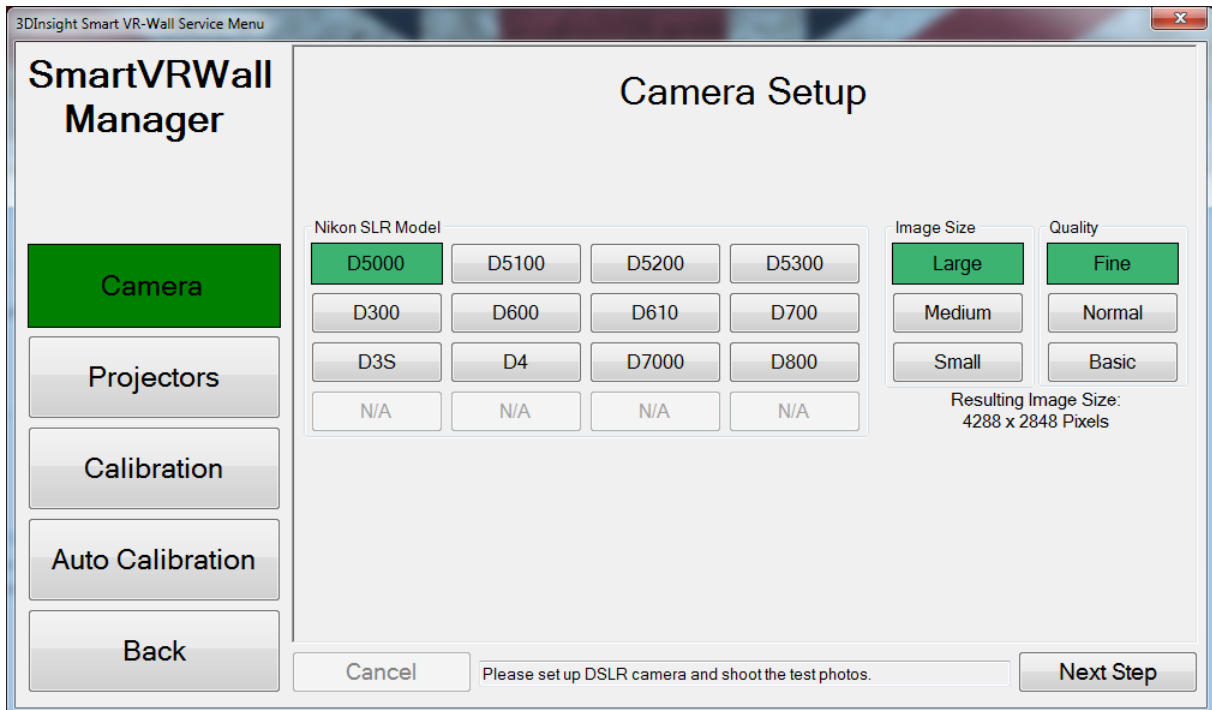
1. Go to “Calibration” in the main menu.



2. Enter PIN (preinstalled PIN: 2345) and Click “OK”



5.1. Camera settings



The screenshot shows the 'Camera Setup' window of the '3DInsight Smart VR-Wall Service Menu'. On the left is a sidebar titled 'SmartVRWall Manager' with buttons for 'Camera' (highlighted in green), 'Projectors', 'Calibration', 'Auto Calibration', and 'Back'. The main area is titled 'Camera Setup' and contains two selection grids. The 'Nikon SLR Model' grid has buttons for D5000, D5100, D5200, D5300, D300, D600, D610, D700, D3S, D4, D7000, D800, and four 'N/A' buttons. The 'Image Size' grid has buttons for 'Large' (highlighted), 'Medium', and 'Small'. The 'Quality' grid has buttons for 'Fine' (highlighted), 'Normal', and 'Basic'. Below these grids, it says 'Resulting Image Size: 4288 x 2848 Pixels'. At the bottom are 'Cancel' and 'Next Step' buttons, with a text box in between that says 'Please set up DSLR camera and shoot the test photos.'

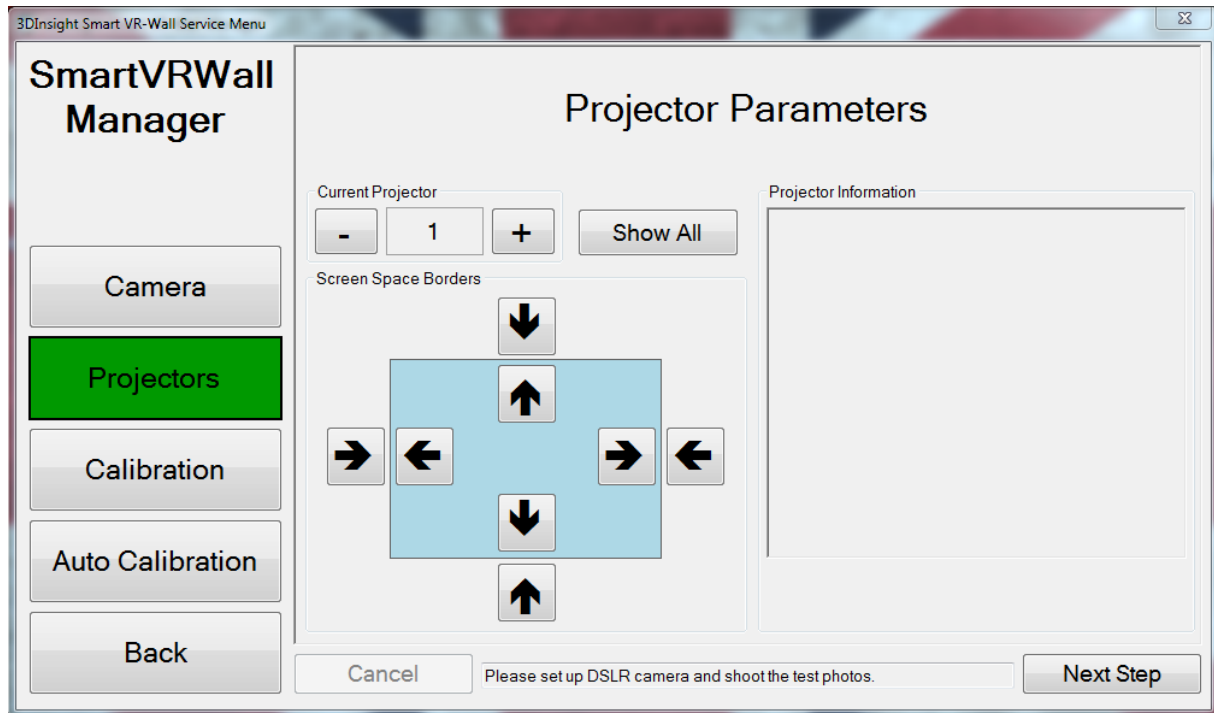
Connect the Nikon Camera via USB to the Tablet and make sure it is Turned on.

Please chose the current Nikon Camera you are using for Calibration. Make sure the Camera is set to Manual and the Lens Auto focus is Set to Automatic.

Image Size: **Large**

Quality: **Fine**

5.2. Projector Parameters

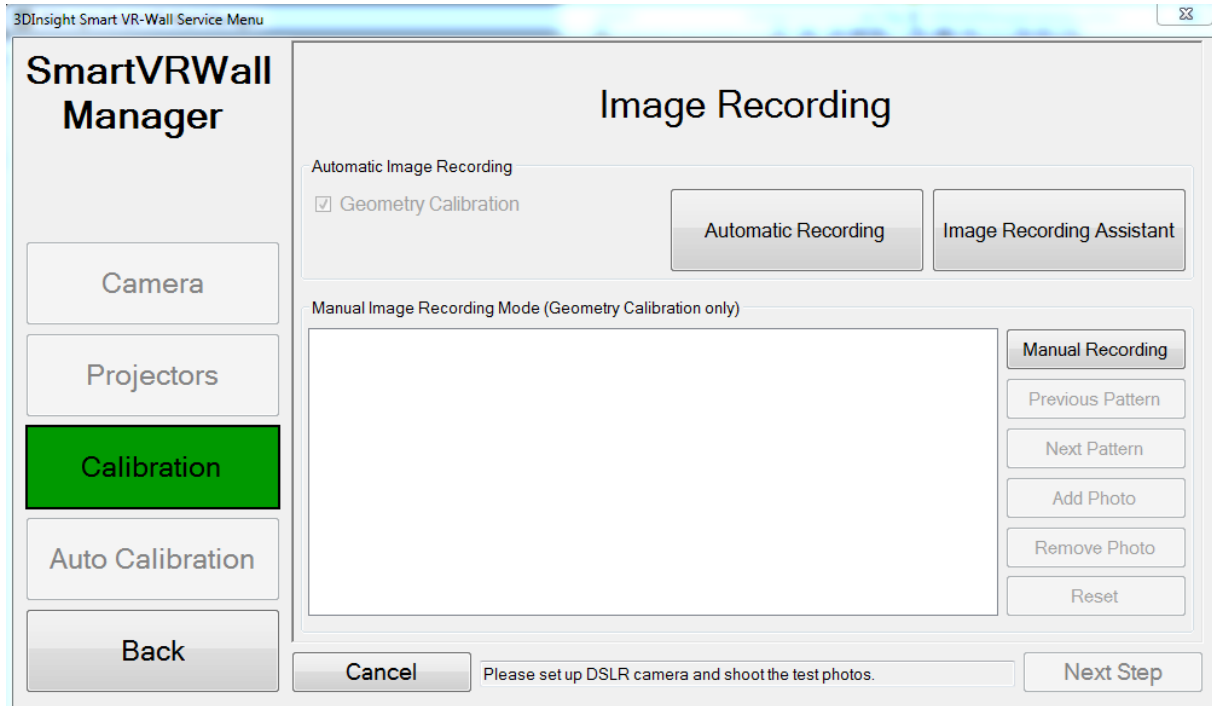


After you Mechanical Moved the Smart VR Wall it is necessary to recalibrate the Projectors. For that Line up the Grid with the Wall and Each Projector.

Use the Arrow Keys to Adjust the Grid. Give the Grid around 3-4 Pixel inside and 5-6 Outside Room. If you find bigger Mistakes inside the Grid you also can adjust the Projectors Mechanical.

5.3. Calibration

1. Select Calibration



Make sure the Camera Lens is set to Automatic Focus, and the Camera is plugged into the Tablet with a USB Cable.

BILD kommt

Go to Automatic Recording and follow the instructions.

BILD kommt

In the first Step the System will Take a Focus Picture of the Wall to ensure the Camera is Lined up properly and Focused right. For that it will Shoot a Picture with the Auto Focus.

BILD kommt

Check the Picture for the right focus so you can see all Outlines of the Green Grid properly. Ensure the full Wall is on the Picture. If not readjust the Camera and take another Picture till you got a satisfying Picture.

This Process ensures the Following Pictures, for the actual Calibration, will be done with Prober Focus and continuous.

BILD kommt

After your done with the Auto Focus process go to the Next Step. At this Point the Wallmanager will ask you to switch the Auto focus to Manual Mode.

There for use the small switch on the Lens and switch it from **A** to **M/A**. This switch can be found on the Side of you Camera Lens.

BILD kommt

Hit OK and the Camera will Start to Take Pictures for Lighting. If the Light is ok it will automatically continue to Take Pictures for the Calibration.

BILD kommt

If the Light is not good the Wallmanager will tell you if he needs a higher Blending or a different exposure time. There for use the 2 Drop Down Menus to the Left.
Adjust the Parameters and take Test Pictures till the Wallmanager continuous.

BILD kommt

After the General Pictures are taken the Wallmanager will switch into the corner Detection. It will first do a Automatic Detection of the Smart VR Walls Screen based on the Green Grid.
Match the corners by using the arrow Keys.

BILD kommt

Continue with Next Step and the Tablet will start to send all Data to the Pixel Processor.

This will take a couple of minutes but not more than 5min.

BILD kommt

At this Point you can already use the Smart VR Wall again. As soon as the Calculation Process is done by the Pixel Processor the new Calibration will be applied.

BILD kommt

The New Calibration will Show up in your Menu with the Current Time and Date. You can rename it at any time to match your Needs.